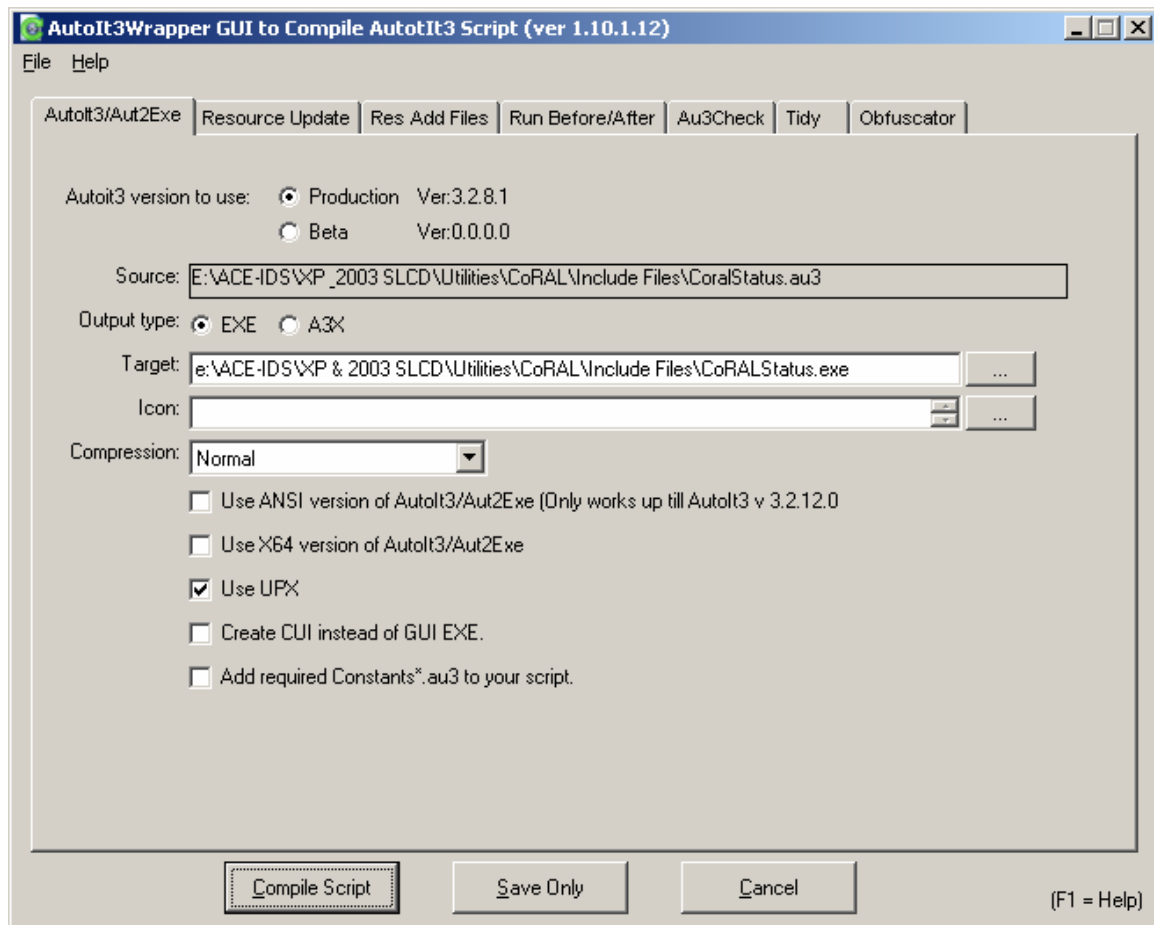
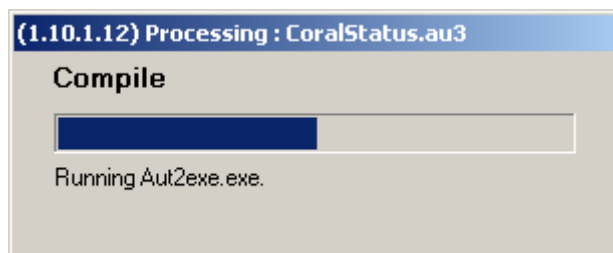


The actual path to the AutoIt source file is:
E:\ACE-IDS\XP & 2003 SLCD\Utilities\CoRAL\Include Files

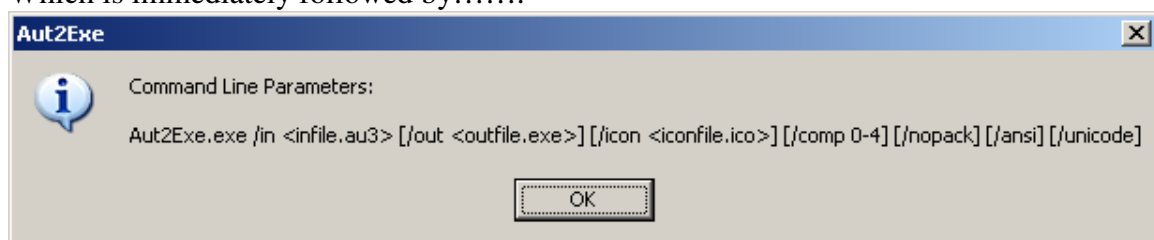
When I press Ctrl-F7 I get the following dialog, and, as you can see, the Source path doesn't reflect the ampersand.



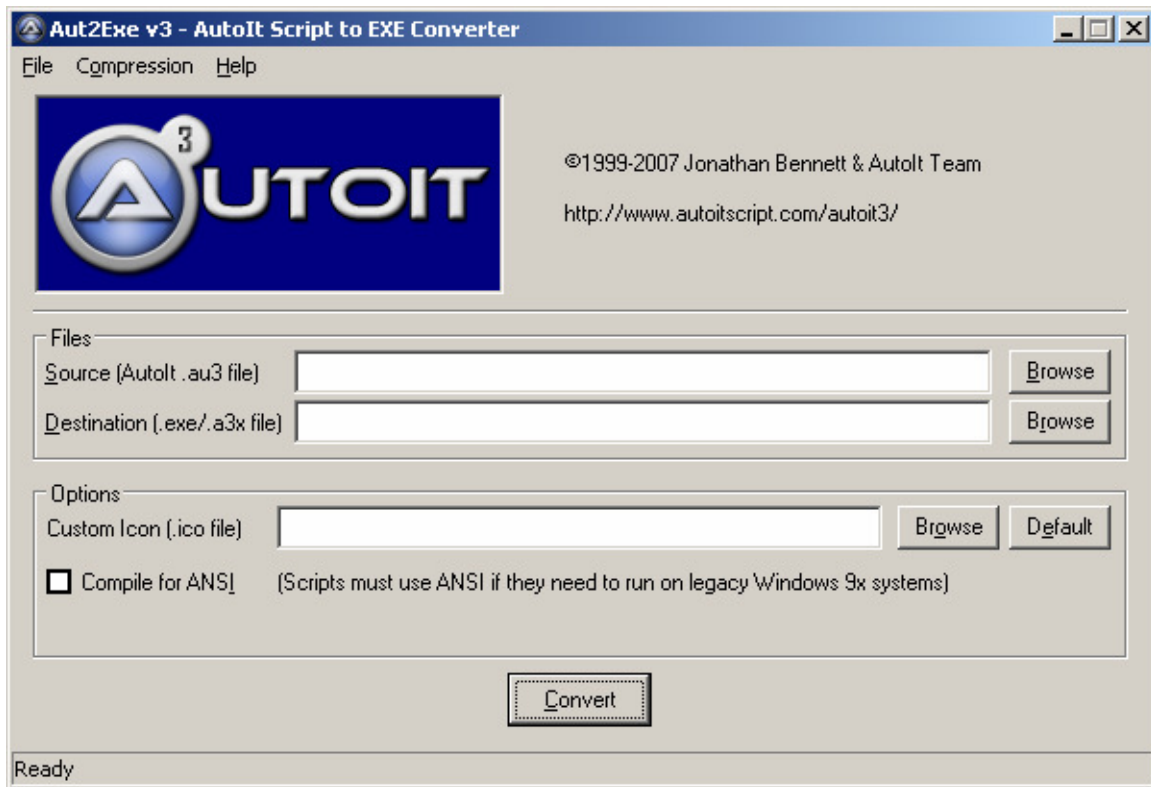
Then when I press the “Compile Script” button I briefly get.....



Which is immediately followed by.....



Then after pressing the “OK” button I get the following dialog...



As you can see the source and destinations are blank.