

2010

Xenobiologist

[ORGANIZEINCLUDES4AUTOIT3]

1. Index

| | |
|---|----|
| 1. Index | 2 |
| 2. Introduction..... | 3 |
| 3. Installation | 4 |
| 4. Getting started | 5 |
| Starting Organize Includes..... | 5 |
| Settings | 7 |
| Includes Search..... | 8 |
| Includes Options..... | 8 |
| Includes Placement | 8 |
| Start Options | 8 |
| 5. Using Organize Includes without SciTE4AutoIt | 9 |
| 6. Settings.ini | 10 |

OrganizeIncludes4AutoIt3

2. Introduction

OrganizeIncludes4AutoIt3(OI) is a tool which helps you to find the correct your include files you're your AutoItv3 script.

In an AutoIt script, other scripts can be included using the #include" command. If you do not know which include files you need, then OI can helps you to find it out.

OI works well with [SciTE4Autoit3](#) from Jos van der Zande, but you can also use it via command line. This way you needn't a IDE at all.

Features:

- Show needed include files
- Show unneeded, but included include files
- Show correctly included files
- Search in Release or Beta version
- Search in your includes directory
- Search in the script directory
- Different remove options (all, unneeded, nothing)
- Different include files placement (top of script, after a keyword)
- Different start options (with GUI, without GUI (silent mode))
- Copy includes to clipboard

3. Installation

You already downloaded the zip-file ☺. Thanks!

Extract the “OrganizeIncludes.zip” into the SciTE install path.

Normally: Programs directory \AutoIt3\SciTE

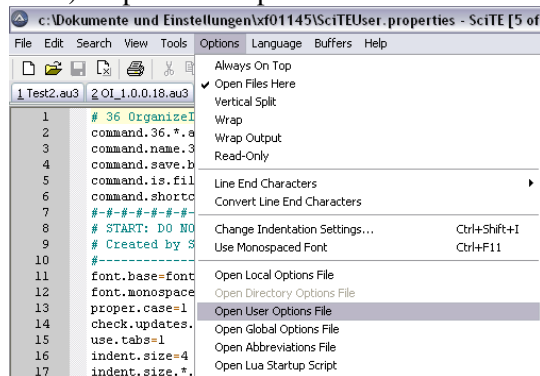
Example (German Windows XP) : c:\Programme\AutoIt3\SciTE\OrganizeIncludes\.

These files come with Organize Includes:

- OI_1.0.0.50.au3
- Settings.ini
- OI_Icons.dll
- OI_help.pdf

Now, we need to tell SciTE the location of OI.

- 1) Start SciTE4AutoIt3
- 2) Open User Options file



- 3) Insert the start statement for OI

```
# 36 OrganizeIncludes
command.36.*.au3="$(autoit3dir)\beta\autoit3.exe"
"${SciteDefaultHome}\OrganizeIncludes\OI_1.0.0.50.au3" "${FilePath}"
command.name.36.*.au3=OrganizeIncludes
command.save.before.36.*.au3=1
command.is.filter.36.*.au3=1
command.shortcut.36.*.au3=Ctrl+Shift+Alt+I
```

If you want to start OI with Beta version then add **\beta** as shown above.

OI_1.0.0.50.au3 is the filename. You may need to change this, when you save the script with a different name or download a new OI script version.

You can change the shortcut here: `command.shortcut.36.*.au3=Ctrl+Shift+Alt+I`

That's all, now can start the script.

4. Getting started

Open an AutoIt script in SciTE.

You can start OI using the shortcut “Ctrl+Shift+Alt+I” or via menu.

Starting Organize Includes

Tools →

| | |
|---------------------------------|-------------------------|
| Trace: Add Trace Lines | |
| Trace: Add Func Trace Lines | |
| Trace: Remove ALL Trace lines | |
| DebugTrace: Comment ALL lines | Alt+Shift+D |
| DebugTrace: UnComment ALL lines | Alt+Ctrl+D |
| Open Include | Alt+I |
| Open Include Beta | Alt+Shift+I |
| OrganizeIncludes | Ctrl+Shift+Alt+I |
| Stop Executing | Ctrl+Break |
| | |
| Next Message | F4 |
| Previous Message | Shift+F4 |
| Clear Output | Shift+F5 |
| Switch Pane | Ctrl+F6 |

If you haven’t changed the settings (settings.ini), then the GUI appears.

Let’s say, you have this piece of code:

```

1  #include <File.au3>
2  #include <GuiConstantsEx.au3>
3  GUICreate("My GUI combo") ; will create a dialog box that when displayed is centered
4  Global $cmb_item = GUICtrlCreateCombo("", 10, 10, 90, 120, $CBS_DROPDOWNLIST); create first item
5  GUICtrlSetData(-1, "Autoit|SciTE|OrganizeIncludes", "Autoit"); add other item snd set a new default
6  Global $label = GUICtrlCreateLabel(_NowDate(), 150, 10, 90, 20, $SS_SUNKEN)
7  GUISetState()
8
9  ; Run the GUI until the dialog is closed
10 While 1
11     $msg = GUIGetMsg()
12     Select
13     Case $msg = $GUI_EVENT_CLOSE
14         ExitLoop
15     Case $msg = $cmb_item
16         GUICtrlSetData($label, GUICtrlRead($cmb_item))
17     EndSelect
18 WEnd

```

Here is the source to test :

```

#include <File.au3>
#include <GuiConstants.au3>
GUICreate("My GUI combo") ; will create a dialog box that when displayed is centered
Global $cmb_item = GUICtrlCreateCombo("", 10, 10, 90, 120, $CBS_DROPDOWNLIST); create first item
GUICtrlSetData(-1, "Autoit|SciTE|OrganizeIncludes", "Autoit"); add other item snd set a new default
Global $label = GUICtrlCreateLabel(_NowDate(), 150, 10, 90, 20, $SS_SUNKEN)
GUISetState()

; Run the GUI until the dialog is closed
While 1
    $msg = GUIGetMsg()
    Select
    Case $msg = $GUI_EVENT_CLOSE
        ExitLoop
    Case $msg = $cmb_item
        GUICtrlSetData($label, GUICtrlRead($cmb_item))
    EndSelect
WEnd

```

Running the syntax check you'll get some warnings like :

```
>Running AU3Check (1.54.19.0) from:C:\Programme\AutoIt3\Beta
C:\Autoit\ForumTests\GUI_Button.au3(4,77) : WARNING: $CBS_DROPDOWNLIST: possibly used before declaration.
Global $cmb_item = GUICtrlCreateCombo("", 10, 10, 90, 120, $CBS_DROPDOWNLIST)
~~~~~^
C:\Autoit\ForumTests\GUI_Button.au3(6,75) : WARNING: $$$_SUNKEN: possibly used before declaration.
Global $label = GUICtrlCreateLabel(_NowDate(), 150, 10, 90, 20, $$$_SUNKEN)
~~~~~^
C:\Autoit\ForumTests\GUI_Button.au3(4,77) : ERROR: $CBS_DROPDOWNLIST: undeclared global variable.
Global $cmb_item = GUICtrlCreateCombo("", 10, 10, 90, 120, $CBS_DROPDOWNLIST)
~~~~~^
C:\Autoit\ForumTests\GUI_Button.au3(6,45) : ERROR: _NowDate(): undefined function.
Global $label = GUICtrlCreateLabel(_NowDate())
~~~~~^
C:\Autoit\ForumTests\GUI_Button.au3 - 2 error(s), 2 warning(s)
!>17:35:53 AU3Check ended.rc:2
>Exit code: 0 Time: 0.567
```

Running the script will fail, because of the errors.

You can include an AutoIt script file, which declares the variable.

Uhh, but maybe you do not know which include file you need to include.

☺ This is the time for OI.

Starting OI shows this:

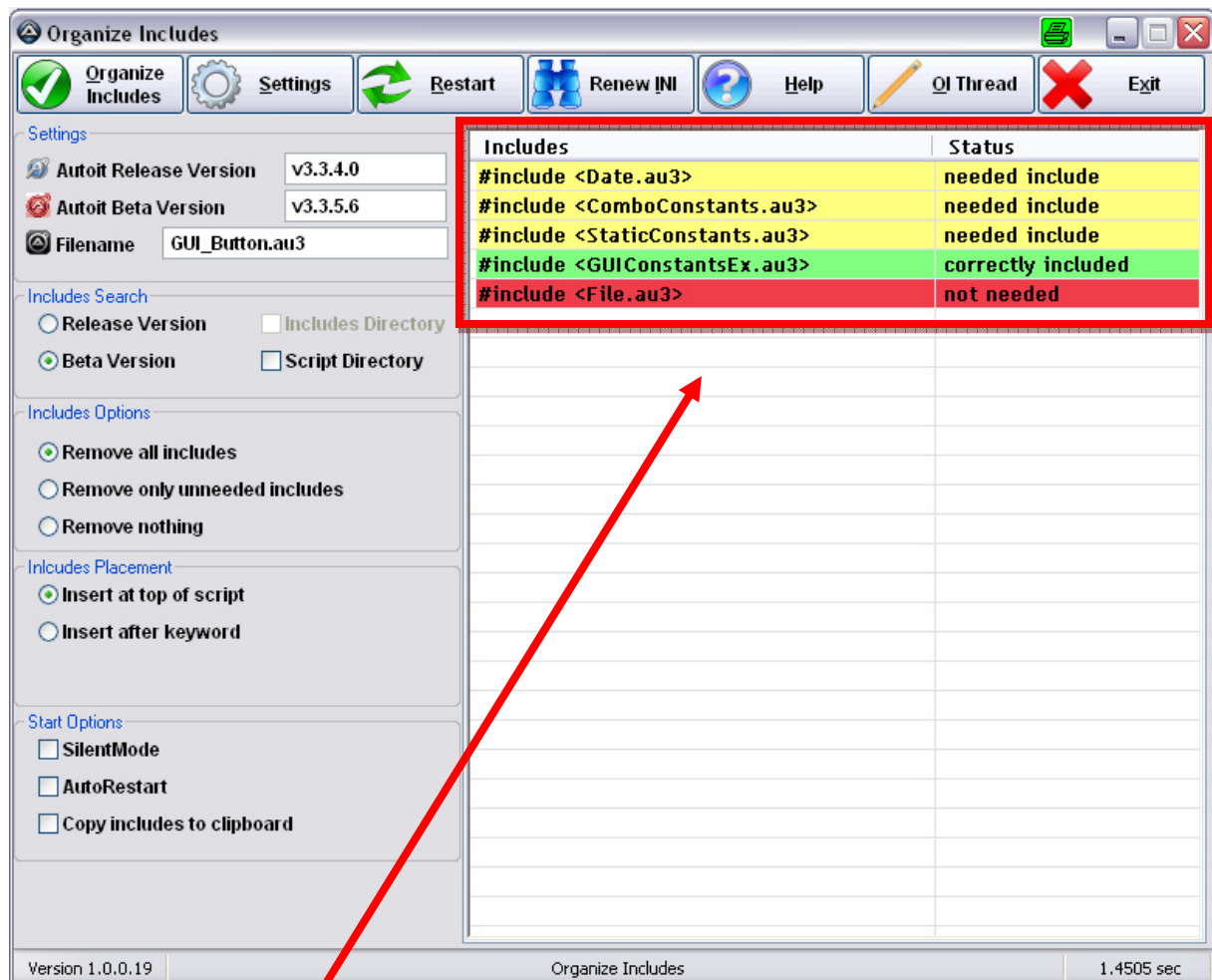
Output pane of SciTE (F8):

```
+> "Organize Includes" for AutoIt3 | Version 1.0.0.19 | © Th.Meger™ | 27.february.2010
+> _NowDate                                     -> Date.au3
+> $CBS_DROPDOWNLIST                           -> ComboConstants.au3
+> $$$_SUNKEN                                  -> StaticConstants.au3
+> $GUI_EVENT_CLOSE                            -> GUIConstantsEx.au3
```



On the left side is the variable or function and on the right side the needed include file.

The GUI looks like this:



What does that mean?

Green = you already included the file and that was correct

Yellow = you need the include file

Red = you do not need that include file

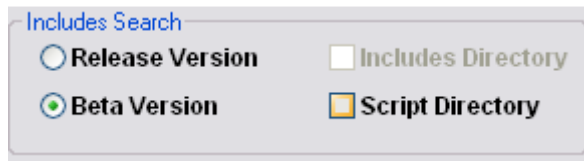
Now we have a look at the options:

Settings



Here are the current installed AutoIt versions and the filename of the investigated script listed.

Includes Search



If Beta version has been installed, then you can distinguish between Release and Beta version of AutoIt includes files.

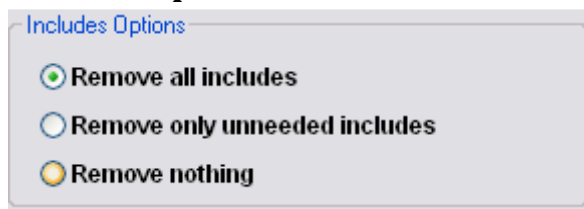
If you have declared your own includes directory, then you can choose whether OI should also have a look into those directories.

(Besides, you can declare the include directories by hitting ALT+I in SciTE or editing the registry key → : 'HKCU\Software\AutoIt v3\Autoit', 'Include')

The script directory is the directory of the current script.

Warning: This may take some time, if there are many au3 files in the script directory.

Includes Options

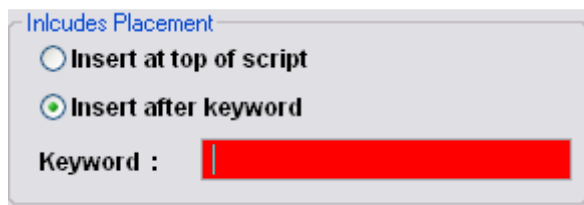


Remove all includes = all lines starting with #include will be removed (excluding comments)

Remove only unneeded includes = only the red ones will be removed

Remove nothing = no include lines will be removed

Includes Placement

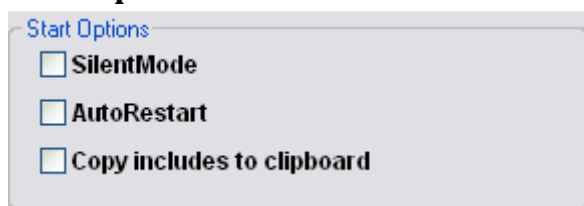


Insert at top of script = includes will be placed as first lines of code

Insert after keyword = You can define a keyword to let OI insert the includes after that line

Until the keyword hasn't found in your source file, the InputBox stays red.

Start Options



Silent Mode = no GUI

AutoRestart = Restarts the script automatically (when Organize includes button was pushed)

Copy includes to clipboard = puts the includes statements into the clipboard buffer

The toolbar of Organize Includes



Organize Includes – Starts the process

Settings – opens a dialog to choose the an ini-file

Restart – restarts the script

Renew INI – Renews the ini-files selected

Help – starts this pdf file

OI Thread – starts the browser with the OI thread on the AutoIt forum

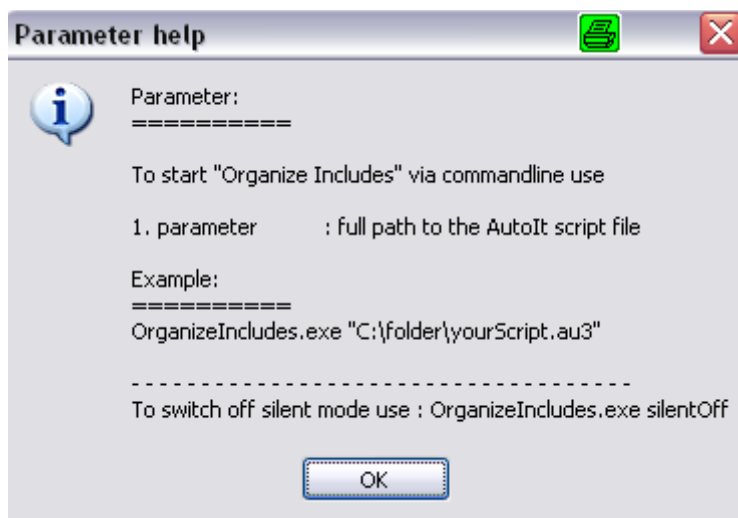
Exit – exits the script, but saves the chosen options before

5. Using Organize Includes without SciTE4AutoIt

You can compile Organize Includes and start it with the parameters.

No GUI will pop-up when the script is started in compiled mode.

Starting the exe with parameter -? or /? will show a help dialog



6. Settings.ini

The settings.ini is the brain of Organize Includes.

```
1
2  [Version]
3    Beta=v3.3.5.6
4    Release=v3.3.6.0
5  [Options]
6    SearchRelease=0
7    SearchBeta=1
8    SearchUDFsDir=0
9    SearchScriptDir=1
10   Green=0x80FF80
11   Yellow=0xFFFF80
12   Red=0xEF3D4A
13   Keyword=#include-once
14   Remove=0
15   InsertIncludes=1
16   IncludesFormatStart=#include <
17   IncludesFormatEnd=>
18   SilentMode=1
19   AutoRestart=0
20   CopyToClipboard=0
21   Sort=1
22   Created=2010/03/03 - 22:22:54
23
```

The settings from the OI-GUI can also be changed directly in the settings.ini.

Sort 1 = alphabetically

Sort 0 = sort the includes by length